

NCERT SOLUTIONS

CLASS - 8TH



aglasem.com

Class : 8th
Subject : Science
Chapter : 8

Chapter Name : CELL – STRUCTURE AND FUNCTIONS

Q1 Indicate whether the following statements are True (T) or False (F).

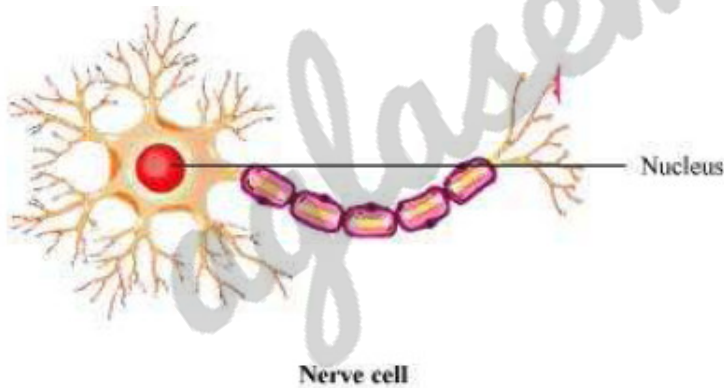
- (a) Unicellular organisms have one-celled body. (T/F)
- (b) Muscle cells are branched. (T/F)
- (c) The basic living unit of an organism is an organ. (T/F)
- (d) Amoeba has irregular shape. (T/F)

Answer. (a) Unicellular organisms have one-celled body. (T)
(b) Muscle cells are branched. (F)
(c) The basic living unit of an organism is an organ. (F)
(d) Amoeba has irregular shape. (T)

Page : 98 , Block Name : Exercise

Q2 Make a sketch of the human nerve cell. What function do nerve cells perform?

Answer.



The function of a nerve cell is to transmit messages to the brain and also to take away messages from the brain to the receptor organs. Thus, it controls the working of different parts of the body.

Page :98 , Block Name : Exercise

Q3 Write short notes on the following.

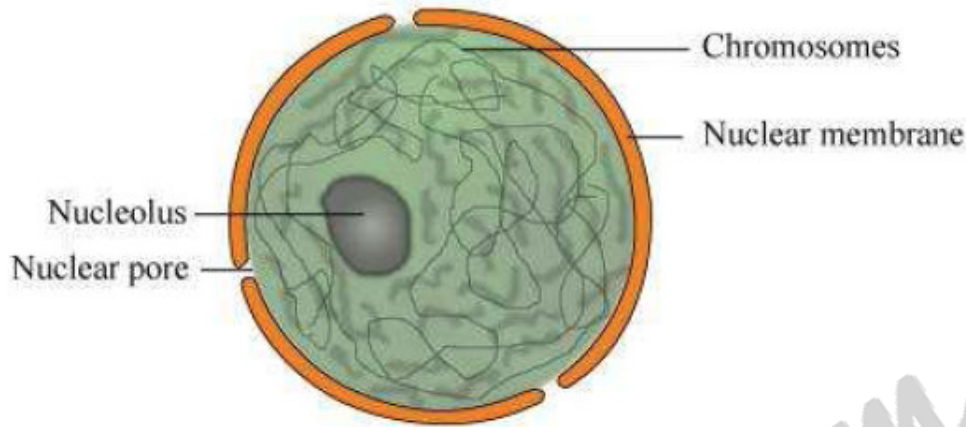
- (a) Cytoplasm
- (b) Nucleus of a cell

Answer. (a) Cytoplasm:

It is a fluid that fills the cell and occurs between the plasma membrane and the nucleus. Cell organelles such as mitochondria, ribosomes, Golgi bodies, etc. are suspended in the cytoplasm. The cytoplasm helps in the exchange of materials between cell organelles.

(b) Nucleus of a cell:

The nucleus is a spherical structure generally present at the centre of a cell. The nucleus is composed of the following components:



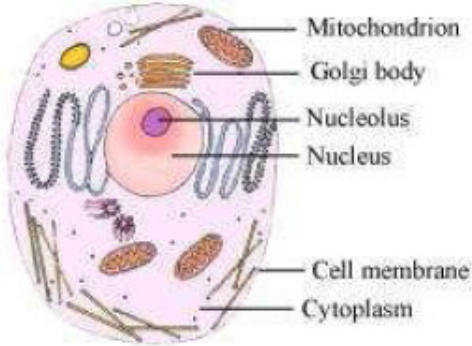
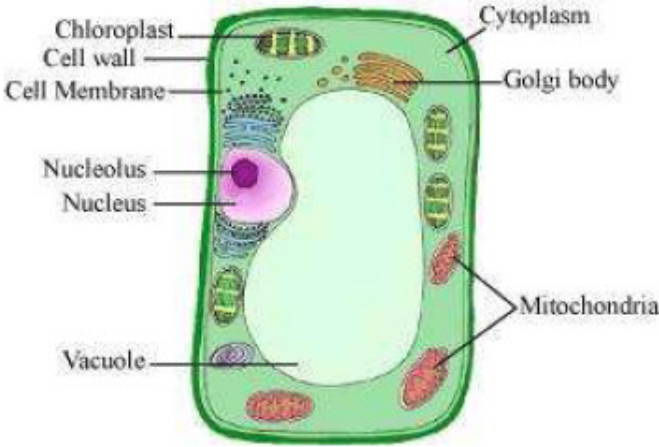
Q4 Which part of the cell contains organelles?

Answer. Cytoplasm is the part of the cell that contains various organelles such as mitochondria, ribosomes, Golgi bodies, etc. Cytoplasm is a fluid that fills the cell and occurs between the plasma membrane and the nucleus.

Page :98 , Block Name : Exercise

Q5 Make sketches of animal and plant cells. State three differences between them

Answer.

Animal cell	Plant cell
 <p style="text-align: center;">Animal cell</p>	 <p style="text-align: center;">Plant cell</p>
They are generally small in size.	They are usually larger than animal cells.
Cell wall is absent.	Cell wall is present.
Vacuoles are small in size.	Vacuoles are larger in size.
No other animal cell possesses plastids except for the protozoan <i>Euglena</i> .	Plastids are present.

Page :98 , Block Name : Exercise

Q6 State the difference between eukaryotes and prokaryotes.

Answer.

Prokaryotes	Eukaryotes
Most prokaryotes are unicellular.	Most eukaryotes are multicellular.
The nucleus is poorly defined due to the absence of a nuclear membrane.	The nucleus is well defined and is surrounded by a nuclear membrane.
Nucleolus is absent	Nucleolus is present.
Cell organelles such as plastids, mitochondria, golgi bodies, etc. are absent.	Cell organelles such as plastids, mitochondria, golgi bodies, etc. are present.
Bacteria and blue-green algae are prokaryotic cells.	Fungi, plant, and animal cells are eukaryotic cells.

Page :98 , Block Name : Exercise

Q10 Where are chromosomes found in a cell? State their function

Answer. The nucleus contains thread-like structures called chromosomes. Chromosomes play an important role in the inheritance of characters. They carry genes that help in the transfer of characters from the parents to the offspring.

Page :98 , Block Name : Exercise

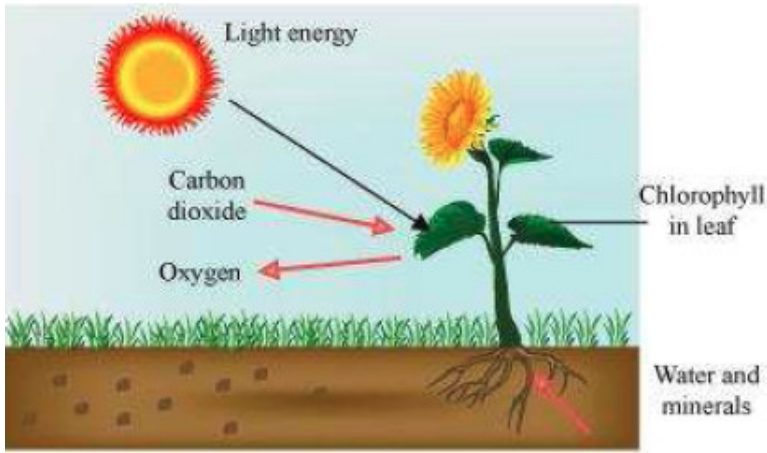
Q11 'Cells are the basic structural units of living organisms'. Explain.

Answer. Cells constitute various components of plants and animals. A cell is the smallest unit of life and is capable of all living functions. Cells are the building blocks of life. This is the reason why cells are referred to as 'the basic structural and functional units of life'. All cells vary in their shapes, sizes, and activities they perform. In fact, the shape and size of the cell is related to the specific function it performs.

Page :98 , Block Name : Exercise

Q9 Explain why chloroplasts are found only in plant cells?

Answer. Chloroplasts are found only in plant cells. They contain a green pigment called chlorophyll. This green pigment is important for photosynthesis in green plants. This chlorophyll pigment traps solar energy and utilizes it to manufacture food for the plant.



Page :98 , Block Name : Exercise

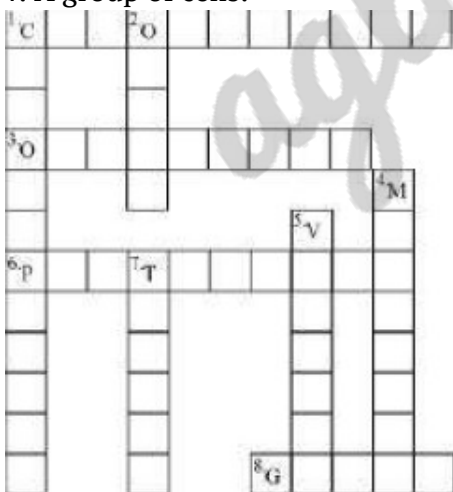
Q11 Complete the crossword with the help of clues given below

Across

1. This is necessary for photosynthesis.
3. Term for component present in the cytoplasm.
6. The living substance in the cell.
8. Units of inheritance present on the chromosomes.

Down

1. Green plastids.
2. Formed by collection of tissues.
4. It separates the contents of the cell from the surrounding medium.
5. Empty structure in the cytoplasm.
7. A group of cells.



Answer. Across

1. CHLOROPHYLL
3. ORGANELLE
6. PROTOPLASM
8. GENES

Down

1. CHLOROPLASTS
2. ORGAN
4. MEMBRANE >br>
5. VACUOLE

Page :98 , Block Name : Exercise

aglasem.com