

NCERT SOLUTIONS

CLASS - 6TH



aglasem.com

Class : 6th

Subject : Science

Chapter : 7

Chapter Name : GETTING TO KNOW PLANTS

Q1 Correct the following statements and rewrite them in your notebook.

- (a) Stem absorbs water and minerals from the soil.
- (b) Leaves hold the plant upright.
- (c) Roots conduct water to the leaves.
- (d) The number of petals and stamens in a flower is always equal.
- (e) If the sepals of a flower are joined together, its petals are also joined together.
- (f) If the petals of a flower are joined together, then the pistil is joined to the petal.

Answer. (a) Root absorbs water and minerals from the soil.

(b) Stem holds the plant upright.

(c) Stem conducts water to the leaves.

(d) The number of petals and sepals in a flower may be different in different plants.

(e) If the sepals of a flower are joined together, then its petals may or may not be joined together.

(f) If the petals of a flower are joined together, then the stamen may or may not be joined to the petal.

Page : 64 , Block Name : Exercise

Q2 Draw (a) a leaf, (b) a taproot and (c) a flower, you have studied for Table 7.3.

Answer. (a) Leaf of a rose plant



(b) Taproot of a rose plant



(c) Flower of a rose plant



Page : 64 , Block Name : Exercise

Q3 Can you find a plant in your house or in your neighborhood, which has a long but weak stem? Write its name. In which category will you place it?

Answer. The money plant has a long and weak stem. It comes under the category of climbers. Climbers are plants that readily take support on neighbouring structures as they have a weak stem.

Page : 64 , Block Name : Exercise

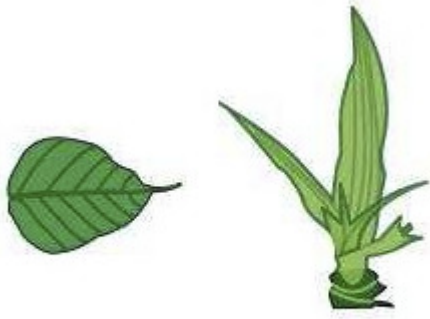
Q4 What is the function of a stem?

Answer. The main function of a stem in plants is that it helps in the conduction of water and minerals from the roots to the leaves and other parts of plants. It also provides support to branches, leaves, flowers, fruits, and buds of plants.

Page : 64 , Block Name : Exercise

Q5 Which of the following leaves have reticulate venation? Wheat, tulsi, maize, grass, coriander (dhania), China rose

Answer. The leaves of tulsi, coriander, and China rose have reticulate venation, whereas maize, grass, and wheat have parallel venation. In leaves with reticulate venation, the veins are arranged in a net-like pattern. In parallel venation, the veins are arranged parallel to one another.



Leaves with reticulate and parallel venation

Page : 64 , Block Name : Exercise

Q6 If a plant has fibrous root, what type of venation do its leaves have?

Answer. Plants with fibrous roots have parallel venation in their leaves. For example, grass, wheat, maize, etc. have fibrous roots with parallel venation.



Fibrous roots with parallel venation

Fibrous roots have thin and moderately growing branches arising from the stem. Parallel venation, on the other hand, has leaves in which the veins are arranged parallel to each other.

Page : 64 , Block Name : Exercise

Q7 If a plant has leaves with reticulate venation, what kind of roots will it have?

Answer. Plants with reticulate venation in their leaves are likely to have tap roots. For example, a carrot or a rose plant has leaves with reticulate venation and its roots are called tap roots.



Taproots and reticulate venation

In tap roots, there is one main root known as the tap root' that grows straight down from the stem. It also has smaller roots known as 'lateral roots'. In leaves with reticulate venation, the veins are arranged in a net-like pattern.

Page : 64 , Block Name : Exercise

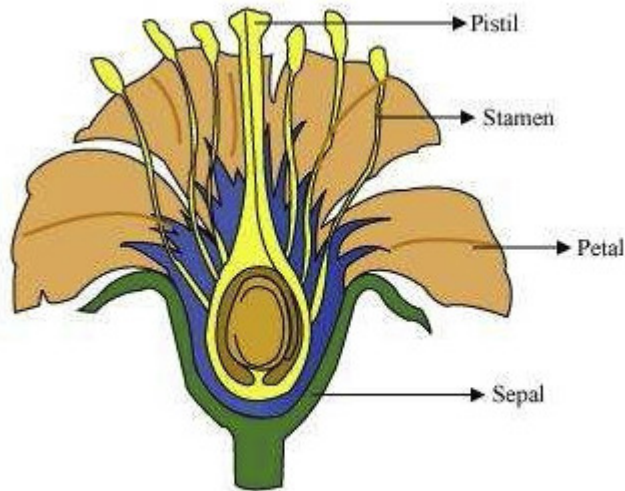
Q8 Is it possible for you to find out whether a plant has taproot or fibrous roots by looking at the impression of its leaf on a sheet of paper?

Answer. Yes. We can recognize leaves without seeing them. You can look for the type of roots of the plant and identify the type of leaf. If the plant has fibrous roots, then its leaves have parallel venation, and if the plant has tap roots, then its leaves have reticulate venation.

Page : 64 , Block Name : Exercise

Q9 What are the parts of a flower.

Answer. A flower consists of sepals, petals, stamens, and pistils. A stamen has two parts called the anther and the filament. A pistil has three parts called the stigma, style, and ovary.



A flower showing all its parts

Page : 64 , Block Name : Exercise

Q10 From the following plants, which of them have flowers? Grass, maize, wheat, chilli, tomato, tulsi, peepal, shisham, banyan, mango, jamun, guava, pomegranate, papaya, banana, lemon, sugarcane, potato, groundnut.

Answer. The given examples are flowering plants. But, in some plants such as tulsi, pipal, sugarcane, etc. the flowers are not visible. They are so small that they cannot be seen with naked eyes.

Page : 64 , Block Name : Exercise

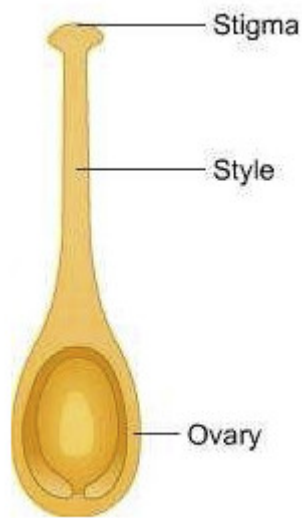
Q11 Name the part of plant which produces food. Name the process.

Answer. The part of plants which prepares food is the leaf. Leaves of a plant prepare food in the presence of sunlight. The process of making food by utilizing water and carbon dioxide in the presence of sunlight is called photosynthesis.

Page : 64 , Block Name : Exercise

Q12 In which part of a flower, you will find the ovary?

Answer. Pistil is the part of the flower that contains the ovary.



Page : 64 , Block Name : Exercise

Q13 Name two plants in which one has joined sepals and the other has separate sepals.

Answer. Flowers with joined sepals are Periwinkle (Sadabahar) and Hibiscus (China rose).
Flowers with separated sepals are Rose and Magnolia.

Page : 64 , Block Name : Exercise